



## Ford Maverick Installation Instructions

**Please read instructions thoroughly before starting installation**

**\*\*Remove all contents of the Softopper carefully to protect from scratches.\*\***

Windows scratch easily! Keep protective layer placed between them when they are stacked.



Estimated Installation Time: 1 hour

**Beginning Note:** It is easiest to do the initial installation in warmer temperatures. The fabric of the top is at its tightest when it is new. Installing it in warmer temperatures initially will ensure that the fabric is easier to work with. The fabric of the top will relax slightly with time and become easier to put on.

## **\*\*Safety Notes\*\***

**Please read the following before driving with the Softopper installed:**

1. It is highly recommended that a boot cover/storage bag (sold separately) is used when the topper is in its retracted position. This will prevent the top from catching in the wind and extend the longevity of the soft top.
2. DO NOT rely in any way on the soft top to contain occupants or objects within the vehicle bed, or to protect against injury or death in the event of an accident or a roll-over.
3. This top will not protect the occupants or objects from falling or flying objects. Never operate vehicle in excess of manufacturer's recommendations or specifications.

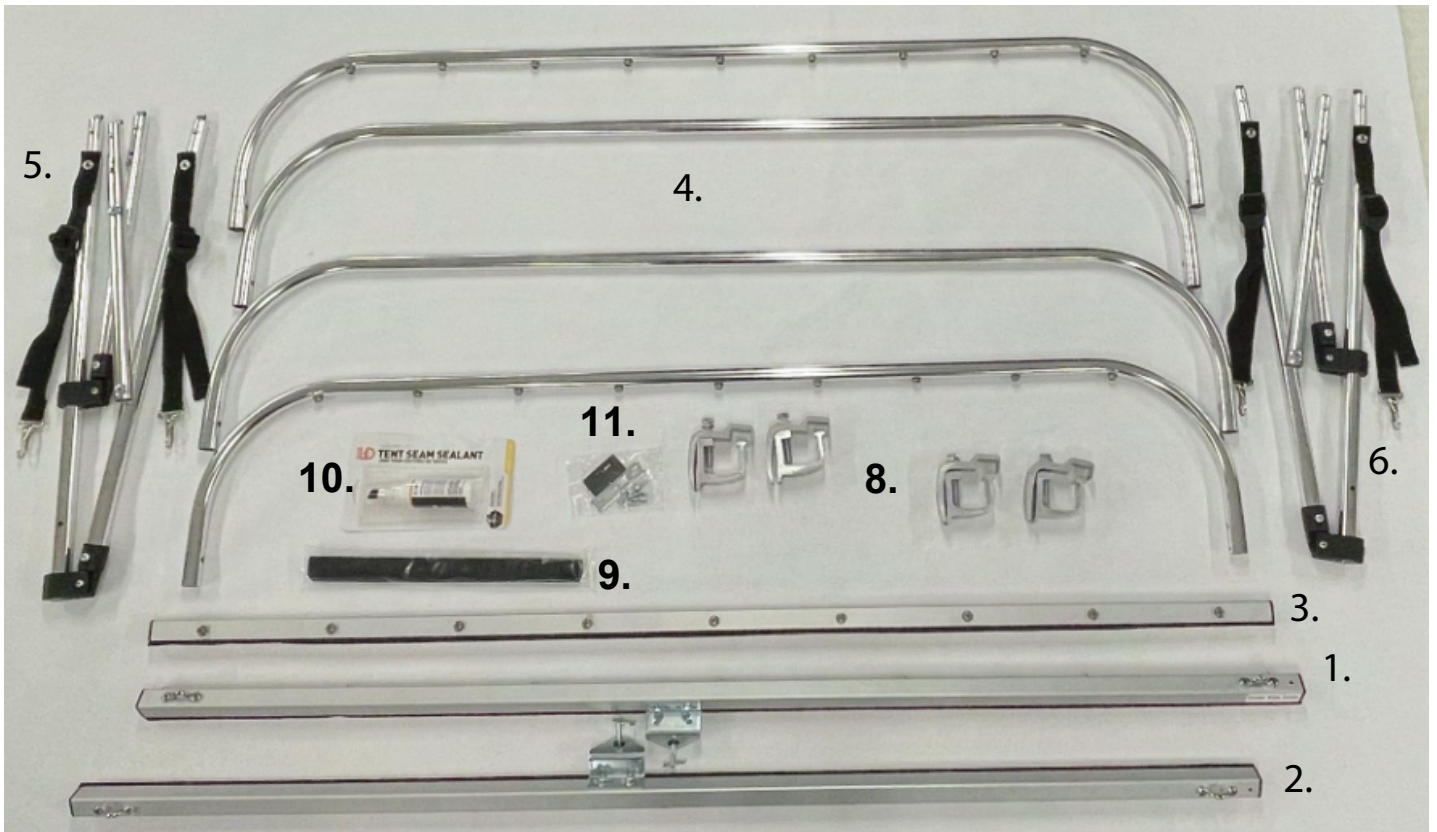
### **Tools needed for installation:**

#3 Phillips Screwdriver  
Tape Measure  
9/16" Wrench  
Pencil (Or Marker)  
Scissors

### **Table of Contents**

1. Inventory .....	3
2. Hardware Installation	
Bedrails .....	4
Folding Frame .....	8
3. Soft Top Canopy Installation .....	10
4. Retracting the Soft Top .....	15
5. Optional Driving Configurations .....	17
6. Rear Screen Installation (Purchased Separately) .....	19
7. Softopper Care and Maintenance .....	20
8. Warranty Information .....	21

## Your Softopper Kit Includes the Following Pieces



1. Driver Side Bedrail
2. Passenger Side Bedrail
3. Front Bedrail
4. Cross Bars (4)
5. Driver Side Folding Frame Upright Assembly
6. Passenger Side Folding Frame Upright Assembly
7. Softopper Canopy (Not depicted above)
8. Clamps (4)
9. Pack of Velcro
10. Bottle of Seam Sealer
11. Brackets (2), Screws (6) and Weather Stripping (1)

## Bedrail Installation

**\*\*Note\*\*** Driver side depicted in all photos and illustrations throughout instructions. Also, colored instructions are available on our website, [softopper.com](http://softopper.com), under “Installation Instructions”.

1. Locate the driver side bedrail. There is a sticker which designates the driver side front bedrail.



2. Remove the white protective paper from the bottom of the bedrails that is covering the weather stripping. The weather stripping is NOT ADHESIVE, and will not stick to your truck.





3. Place the driver side bedrail on top of the vehicles bed side rail with the snaps facing outward and 3/4" from the rear of the cab.
4. Mark the location of the groove (in the top of the bed side rail) with a pencil.
5. Cut a piece of the weather stripping 3/8" wide and attach it to the foam on the bottom of the Softopper bedrail side. **Note:** Be sure to place the 3/8" weather stripping between the marks on the bedrail side adhering the 3/8" foam to the foam on the bottom of the bedrail. (Not in the groove of the vehicle)



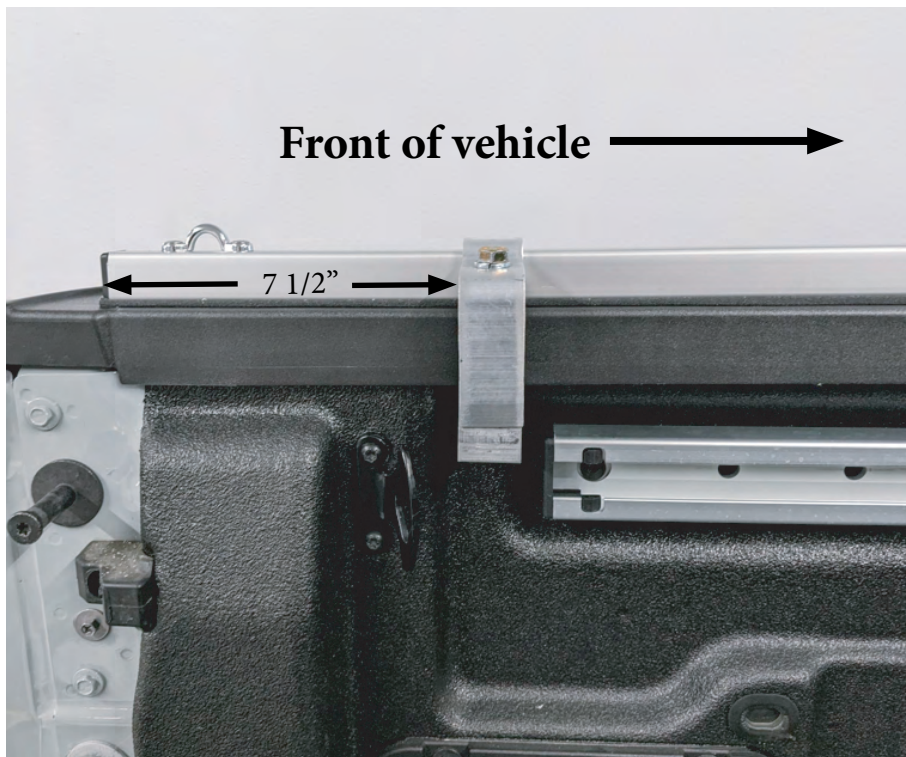


7. Again, place the driver bedside rail on top of the vehicles bed side rail with the snaps facing outward and 3/4" from the rear of the cab.

8. Place the front clamp 1/4" rearward of the footman loop. Leave loose at this time.

9. Place the rear clamp 7 1/2" from the rear of the rail. Leave loose at this time.

\*\*\*\*Repeat Steps 1 through 9 on the passenger side of the vehicle.\*\*\*\*





1. Place the front bedrail on the front of the vehicle bed with the snaps facing forward and the two holes drilled in the ends facing up.

2. Place 1 bracket on top of the bedrails.

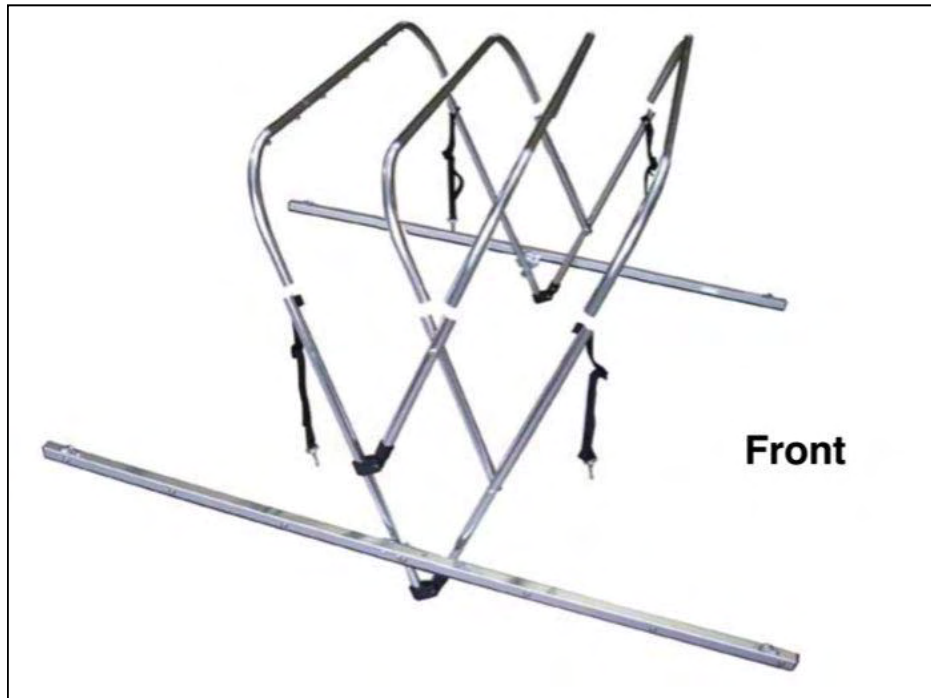


3. Attach the bracket with the #12 sheet metal screws.  
Repeat on the passenger side of the vehicle.

Once the front bedrail is secured on both sides of the vehicle, tighten the 4 clamps.

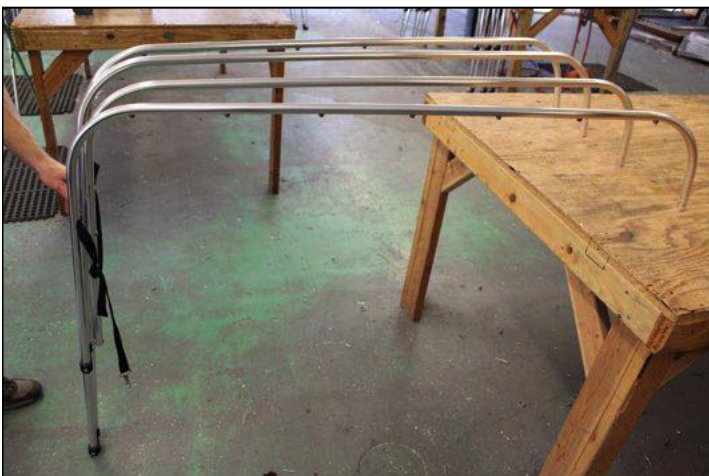
## Folding Frame Assembly and Installation

1. Locate the 4 Cross Bars and the 2 folding frame uprights.



2. Join the 4 cross bars to the 2 folding frames by coordinating the **COLORED DOTS** provided on the pieces and ensuring ALL push pins are locked into their holes.

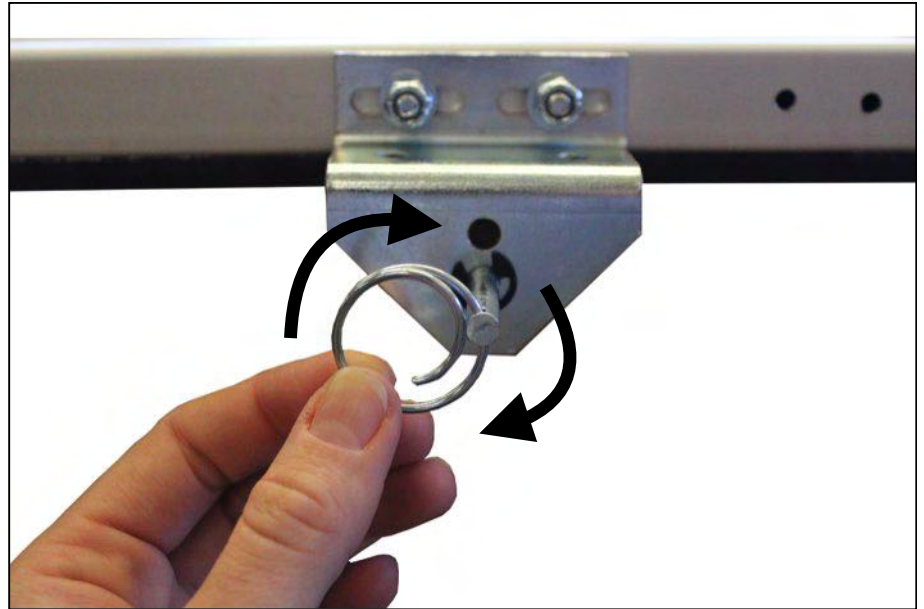
**\*\*Important: Keep fingers clear of the sharp, metal junction where the cross bars will meet the folding frame when clipping them together. Injury is likely if fingers get pinched.**



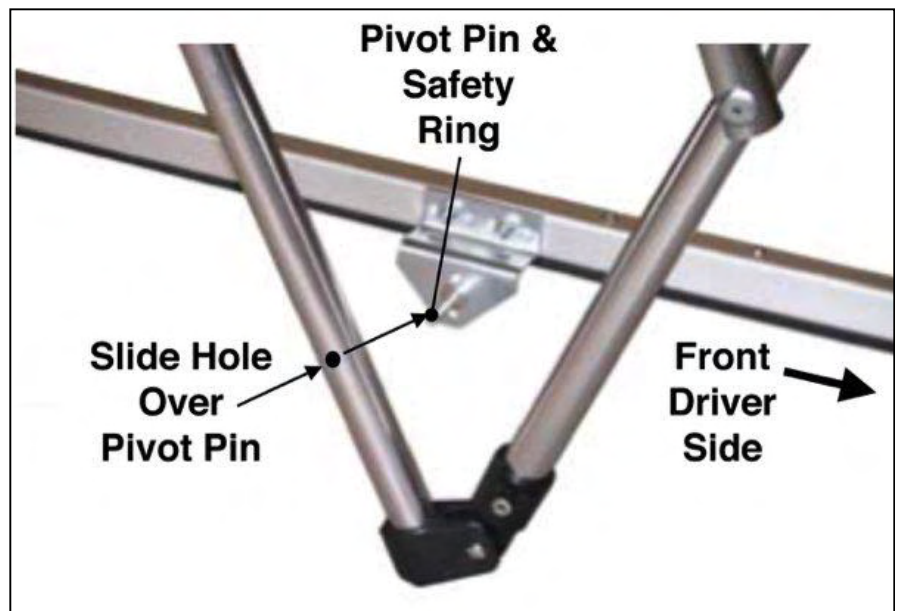
3. **\*\*Tip: It helps to stand the folding frame uprights up, and with another person, jiggle the cross bars down to join them to the uprights.**



4. Remove the safety rings from the pivot pins in the pivot brackets by turning the ring.



5. Using the pre-drilled holes near the bottom of the folding frame, slide the frame onto the pivot pins on each bedrail ensuring the **forward cross bar is forward**. The forward crossbar is the one with the **RED DOT**. Secure the safety rings back on. [The most common installation error is installing the frame on backwards. View photo to ensure correct orientation of the folding frame.]



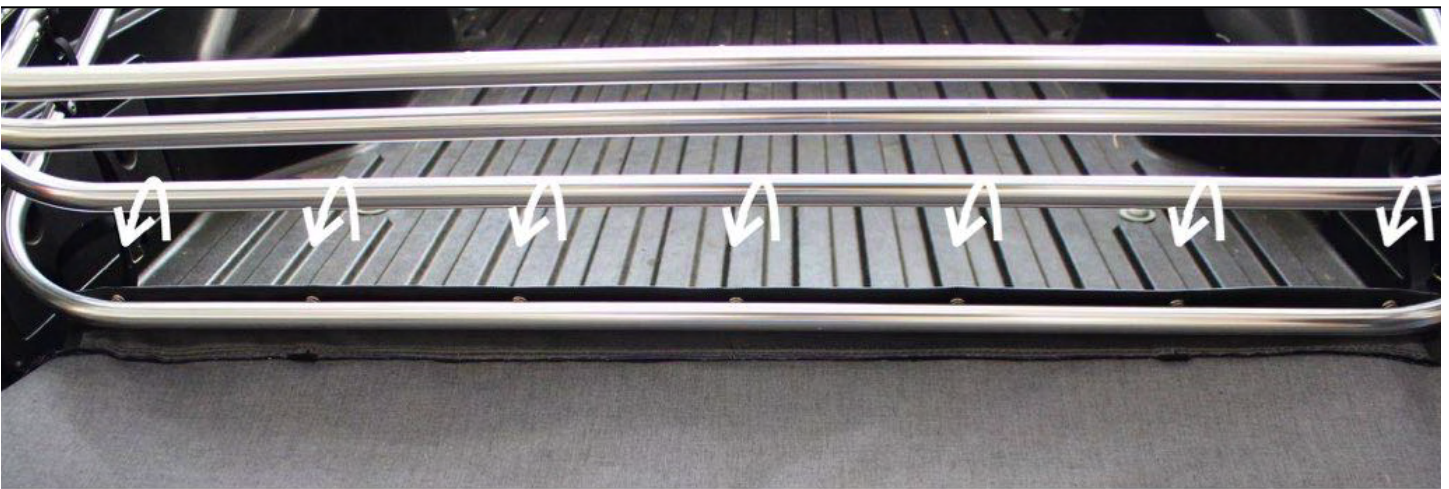
6. **Note:** when reopening the frame from its front position, you must raise all of the cross bars to approximately cab-height before opening the folding frame completely. If the rear cross bar is raised on its own, it will force the forward most cross bar into the cab window.
7. Leave the 4 safety straps that are hanging on the folding frame unclipped for now.

## Soft Top Canopy Installation

1. With the tailgate open, lower the folding frame to the rear of the vehicle.
2. Carefully place the canopy on the tailgate, as shown.

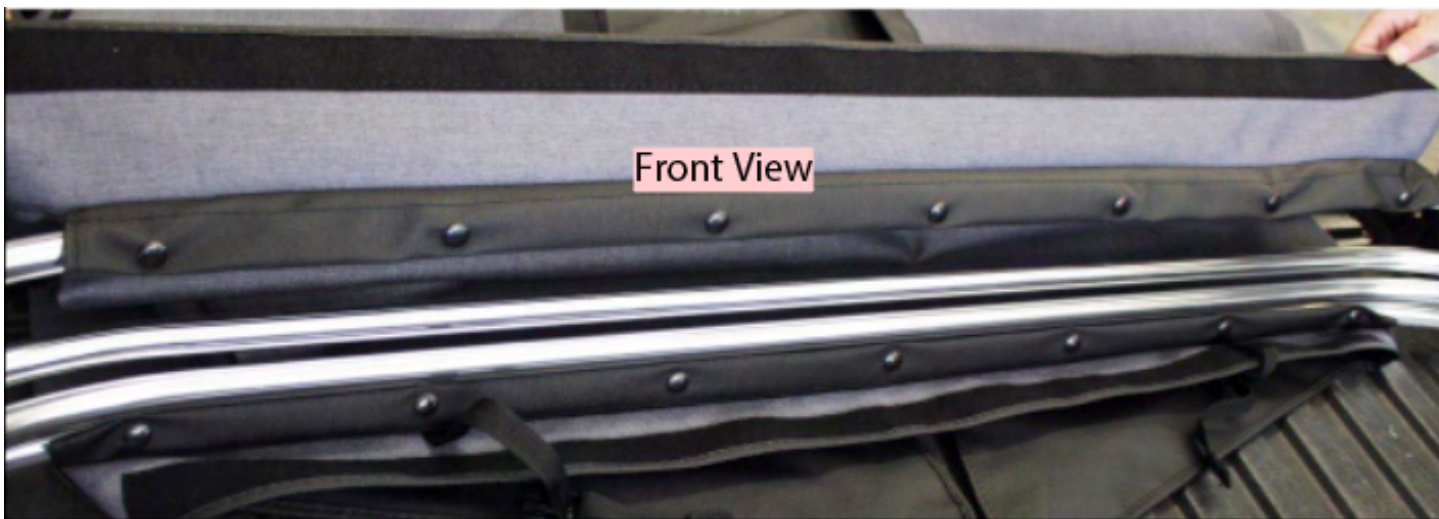


3. Locate the rear window panel snap flap and place it facing up and forward. The rear window has zippers, but the front window does not.
4. Snap the canopy to the snaps on the bottom/rear most cross bar by slipping the fabric **UNDER** the bar and around as shown. Snap the 2 outward most snaps first, then the remaining snaps.



5. Locate the front snap flap.

6. With the snaps facing down, wrap it **OVER** the upper/forward most cross bar (the other one with snaps), and snap all the snaps in the same manner as the rear.



7. From the side of the vehicle, raise the folding frame up into its upward position.

8. Loosely latch the 2 rear safety straps to the rear footman loops and the 2 front safety straps to the bedrail front footman loops as shown below. The straps are already riveted to the folding frame.



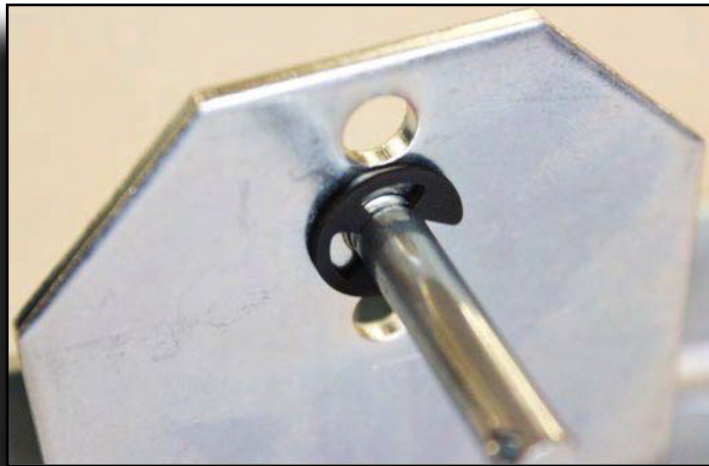
**Front Safety Strap**

**Rear Safety Strap**

9. Undrape the front window and snap it to the front bedrail.
10. Starting with the driver side, undrape the side panel then snap it to the frontmost snap only.
11. On the same side, while pulling down on the rear cross bar, tighten the rear safety strap. The safety strap should be snug, not loose or overtightened.
12. Connect the rearmost snap on the side panel to the rearmost snap on the bedrail. This may take a little extra force the first time, and will loosen slightly after the first few installations.
13. Now snap the rest of the snaps on the driver side.
14. Repeat the above steps on the passenger side. **Note:** We recommend snapping the frontmost and rearmost snaps first each time you close the top. This makes it much easier to snap the remaining snaps and align the canopy properly.
15. Tighten the safety straps further to relieve excess tension on the snaps **\*\*Note that it is a good idea to share the tension between the safety straps and the snaps instead of having all of the tension only on the snaps.** This will also help with the wrinkles in the corner.



16. At this point or any other point during the life of your Softopper, if the canopy is too loose or too tight, you can move the pivot pin to a higher or lower hole in the pivot bracket. Be sure to reinstall the black E-Clips onto the pivot pins. Also, ensure with any new adjustments that the folding frame does not impact the cab window.
17. Make sure the E-Clip is in the small indent in the pivot pin. It helps to use the flat edge of something metal to push the E-Clip on.





Install 3 pieces of velcro along the tailgate (As Shown) to secure the rear window to the tailgate.



## Retracting the Softopper

1. Undo all side snaps.
2. Raise the rear window panel zippers all the way to the top without disconnecting them.
3. Release the rear window Velcro.
4. Optional: Unsnap the front window.  
Carefully and neatly fold the front window on top of the canopy without creasing the window. You can leave the front window secured while retracting the canopy. However, we recommend putting it on top if you plan on storing the canopy in the folded position for a longer period of time.
5. Fold the side panels up onto the roof canopy neatly.
6. Fold the rear window panel up onto the roof as well with the upper zippers still connected.
7. Release the 2 rear safety straps.



8. Standing on the tailgate, or from the side of the vehicle, fold the folding frame forward with the entire canopy on top of the cross bars. The top should fold itself nicely into sections without damaging the windows. Ensure the correct folds are made the first few times.

9. **\*\*Clip the 2 rear safety straps onto the front footloops and tighten them for safety while driving.**

10. Optional: Place your Softopper boot cover (purchased separately) around the Softopper to make for clean, easy storage on or off the vehicle.

11. To fully remove the Softopper, release all 4 safety straps, remove the 2 safety rings from the pivot pins, and completely remove the folding frame. Reinstall the safety rings. Optional boot cover can be placed around the Softopper to make for clean, easy storage on or off the vehicle.

12. **\*\*Optional:** Roll the side panels and the rear window up to create an open air truck bed without removing the upper canopy as shown. Carefully and neatly roll up the panels and secure them by buckling the straps on the canopy. The truck can be driven with the rear window rolled up, and the sides rolled up. However **DO NOT** drive the vehicle with the side panels rolled up and the rear window down due to wind resistance potentially causing damage to the rear window.





## Optional Driving Configurations

1. Retracted without boot cover.  
\*\*Secure both Safety Straps to bedrail footman loops!



2. Retracted with boot cover (purchased separately; makes for clean, easy storage on or off the vehicle). \*\*Leave one safety strap on each side out of the boot cover and secure them to bedrail footman loops!



3. Rear window rolled up and buckled.
4. Rear window removed.
5. Front panel removed.



6. Side panels and rear window rolled up and buckled. \*\*Rear window MUST be rolled up if side panels are rolled up.



7. Side panels partially rolled up.



8. Softopper canopy and folding frame removed from vehicle. Leave bedrails installed. To fully remove the Softopper, release all 4 safety straps, remove the 2 safety rings from the pivot pins, and completely remove the folding frame. **Reinstall the safety rings.** Optional boot cover can be placed around the Softopper to make for clean, easy storage on or off the vehicle.



## Rear Screen Installation \*Purchased Separately

1. Open the tailgate. Unzip the rear window.
2. Sit inside the Softopper on the tailgate, facing the rear window.
3. Undo the small, velcro flap covering the top of the zippers on each side of the rear window, and unfasten the zippers from the other half on the Softopper roof.
4. Pull the window to completely detach it from all of the velcro holding it on at the top. Gently place the window in a storage location where it will not get scratched.
5. While still sitting in the truck bed, place the screen panel right side out.
6. Attach the zippers first, and only pull them down a little bit. Secure the small velcro flap over the top of the zipper.
7. Make sure the roll-up straps are on the inside of the screen panel.
8. Find the small notch in the screen panel that is at the top, in the center. Line the hole up with the center snap on the cross bar above the velcro.
9. Secure the velcro all the way across the top of the screen panel evenly. No velcro should be showing on the outside of the window panel.



# Softopper Care and Maintenance

**Your top is made of the finest materials available. To keep it looking new and for product longevity and durability, it will need periodic cleaning and maintenance. All pieces are individually replaceable; call 1-800-810-7227, or order your parts online at Softopper.com.**

**Washing:** The fabric should be washed from time to time using a mild soap and warm water. Be sure to rinse all soap off the top when washing is complete.

**Vinyl Windows:** Windows should be kept clean to avoid scratching. Wash with a water-soaked sponge or cloth and a mild dishwashing detergent. **Do not use a coarse brush on the windows and never wipe the windows when they are dry.**

**COLD WEATHER:** As with all automotive and marine vinyls, extreme care must be taken when rolling up or folding the windows in cold temperatures. **Vinyl becomes stiff in cold temperatures and may crack. Retracting the Softopper in cold temperatures is not recommended and will void the warranty for the windows (see Warranty information for more detail on length of window warranties).** When opening the rear of the Softopper in cold weather, be sure to raise the zippers as high as possible so that any folding will occur to the topper fabric and not to the vinyl window.

**Zippers:** Keeping the zippers clean and lubricated with a silicone lubricant will help prevent damage and keep the zippers in smooth working condition.

**Leakage:** As with any sewn automotive top there is always a slight risk of leakage. **Right out of the box the Softopper may not be 100% waterproof.** If you experience any water seeping through at the seams, apply **Seam Sure** (supplied), on the **INSIDE** of the affected seams. It will look very messy on the outside of the canopy. **Shake** Seam Sure well and apply liberally to the inside seams concentrating on areas where needle and thread penetrated the fabric.

**Snaps:** Keep snaps clean and lubricated with a silicone lubricant to help prevent snaps from sticking to the studs. If a snap does become stuck to a stud, use a screwdriver and gently pry apart to prevent damage to the snap or top fabric. If any snaps need to be replaced due to sticking or damage please call Softopper and we can send out a small do-it-yourself repair kit.

For further information please contact:

**Softopper**, customer service

(800) 810-7227 or (303) 304-0533

# Warranty

We warrant all of our Softoppers to be free from defects in material and workmanship for a period of one year, with the exception of vinyl windows and zippers, provided there has been normal use and proper maintenance.

**Vinyl Windows** are warranted for a period of 3 months from the date of purchase.

**Zippers** are guaranteed to be in perfect working condition when leaving the factory. Due to atmospheric conditions, dirt, sand, road grime, dust, and abrasive cleaners, etc., zippers are warranted for a period of 6 months from the date of purchase.

**Toyota 4 Runner, Jeep Wrangler, Blazer, Jimmy, Scout, Bronco, and RamCharger** side curtain windows are warranted for 45 days from the date of purchase. Retracting or closing the top when the temperature is below 40 degrees may void the warranty on the side windows, as clear vinyl plastic can crack very easily at these temperatures. Use caution when retracting the top or cleaning off the windows in freezing temperatures.

**Returns must be made within 30 days of purchase**, and must be pre-approved and have Softopper's issued RGA number attached. Any defective items must be returned with proof of purchase to Softopper 333 Centennial Pkwy B, Louisville CO 80027, **freight pre-paid**. Items returned must be carefully packed, in clean condition, with plastic windows protected from scratching and creasing. This warranty does not cover damage resulting from abuse, misuse, alteration, accident or damage in transit. Softopper's obligations under this warranty are limited to the aforementioned **repair** or **replacement** of warranty defects for which return authorization has been received during the warranty period, and Softopper SHALL NOT BE LIABLE FOR ANY INCIDENTAL OR CONSEQUENTIAL DAMAGES ARISING FROM BREACH OF THIS OR ANY IMPLIED WARRANTY. This warranty applies to the original purchaser only. All remedies under this warranty are limited to repair or replacement of any item or items found to be defective by the factory within the time period specified.

For further information or request for repair work, please contact:

**Softopper**, customer service  
(800) 810-7227 or (303) 304-0533