

# SOFTOPPER®

## Installation Instructions

### International Scout II

**Please read instructions thoroughly before starting installation**



**\*\*Remove all contents of the Softopper carefully to protect from scratches.\*\*  
Windows scratch easily! Keep protective layer placed between them when they are stacked.**

**Estimated Installation Time: 1-2 hours**

**Beginning Note:** It is easiest to do the initial installation in warmer temperatures. The fabric of the top is at its tightest when it is new. Installing it in warmer temperatures initially will ensure that the fabric is easier to work with. The fabric of the top will relax slightly with time and become easier to put on.

## **\*\*Safety Notes\*\***

### **Please read the following before driving with the Softopper installed:**

1. It is highly recommended that the provided boot cover/storage bag is used when the topper is in its retracted position. This will prevent the top from catching in the wind and extend the longevity of the top.
2. This product is designed to shield the occupants from ordinary weather conditions.
3. DO NOT rely in any way on the soft top to contain occupants within the vehicle, or to protect against injury or death in the event of an accident or a roll-over.
4. This top will not protect the occupants from falling or flying objects. Never operate vehicle in excess of manufacturer's recommendations or specifications.

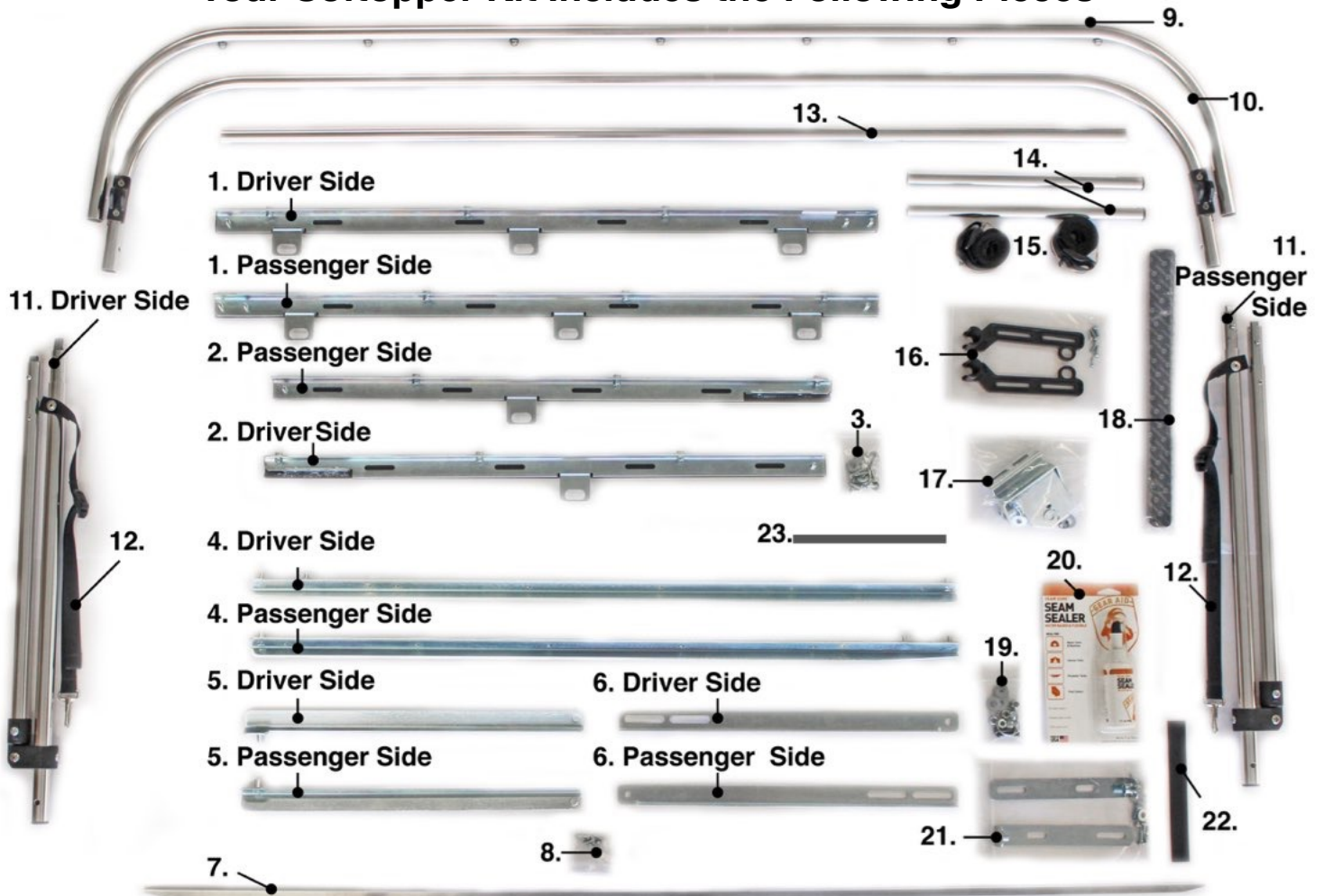
### **Tools needed for installation:**

- 9/64" Drill Bit
- 1/8" Drill Bit
- #2 Phillips Drill Bit
- Drill
- 7/16" Socket Wrench
- #2 Phillips Screwdriver
- #3 Phillips Screwdriver
- Measuring Tape
- Pencil
- Scissors

### **Table of Contents**

1. Inventory.....	3
2. Hardware Installation	
1. Bedrails.....	4
2. Door Surrounds.....	11
3. Windshield Header Bar.....	16
4. Bulb Seal.....	17
5. Folding Frame.....	17
3. Soft Top Canopy Installation.....	20
4. Retracting the Soft Top.....	25
5. Optional Driving Configurations.....	27
6. Softopper Care and Maintenance.....	28
7. Warranty Information.....	29

## Your Softopper Kit Includes the Following Pieces



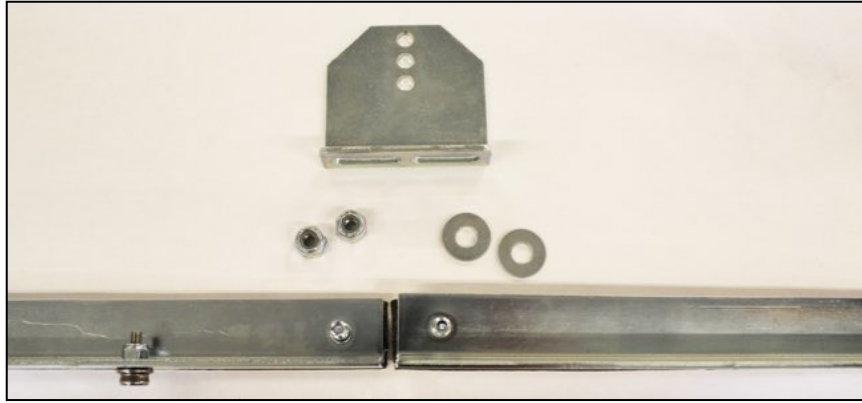
1. Driver and Passenger Side Front Bedrails
2. Driver and Passenger Side Rear Bedrails
3. Small Bag Containing Bedrail Hardware
4. Driver and Passenger Side Horizontal Door Surrounds
5. Driver and Passenger Side Vertical Door Surrounds
6. Driver and Passenger Side Door Surround Extensions
7. Header Bar
8. Small Bag Containing Header Bar Hardware
9. Rear Cross Bar
10. Forward Cross Bar
11. Driver Side and Passenger Side Folding Frame Uprights
12. 2 Safety Straps

13. Rear Window Bar
14. (2) 12" Rear Window Bars
15. 2 Adjustable Tensioning Straps
16. Medium Bag Containing 2 Black Plastic Rear Bar Retainers and Hardware
17. Medium Bag Containing 2 Pivot Brackets, 2 Bedrail Brackets, and Hardware
18. Velcro
19. Small Bag Containing Door Surround Hardware
20. 1 Bottle Seam Sealer
21. Medium Bag Containing Header Brackets
22. 1" Wide Strip of Black Plastic
23. Bulb Seal Strip
24. 1 Softopper Canopy (not depicted above)
25. 1 Boot Cover (not depicted above)

## **Bedrail Installation**

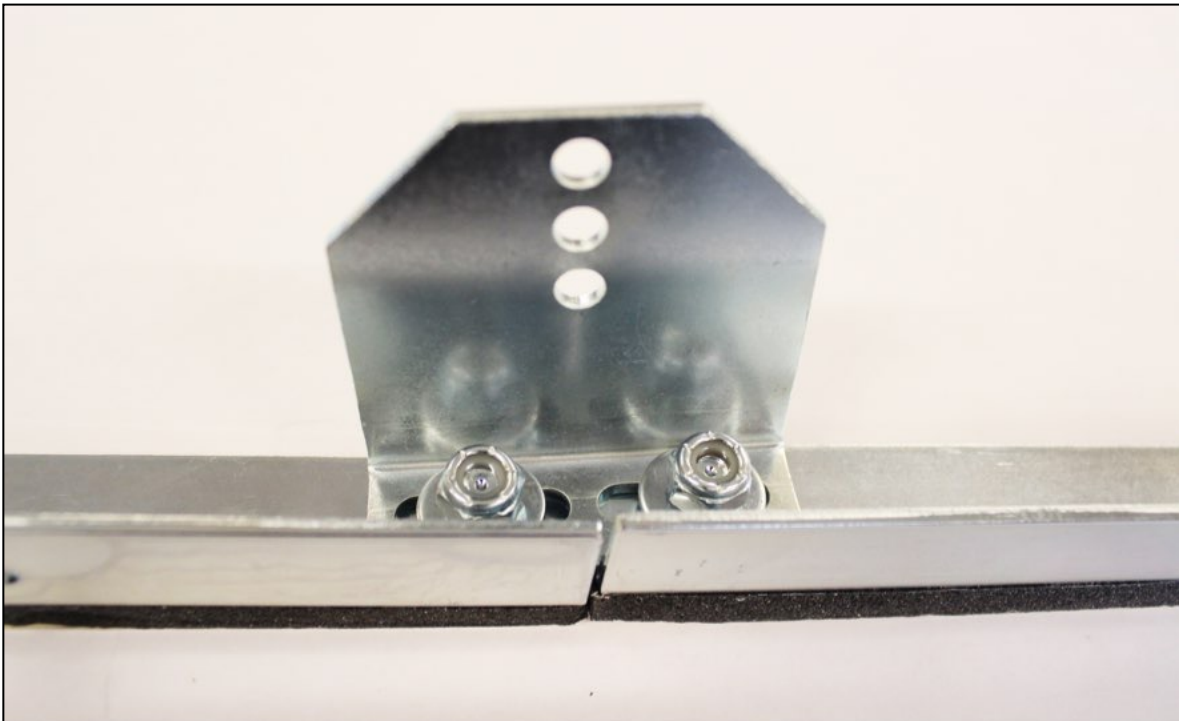
**\*\*Note\*\*** Colored instructions are available on our website, [softopper.com](http://softopper.com), under “Installation Instructions”.

1. Locate the front and rear driver side bedrails, and the bag containing the 2 pivot brackets



with hardware. There is a sticker which designates the driver side front bedrail.

2. Remove the white protective paper from the bottom of the bedrails that is covering the weather stripping. The weather stripping is NOT ADHESIVE, and will not stick to your vehicle.



3. On a clean, level surface join the driver side front bedrail piece and the rear bedrail piece with the slotted pivot point brackets as shown above.

4. For proper alignment, every bolt should be centered in the slots. Use a straight edge to also make the bedrails straight, and then tighten the (2) 1/4-20 nuts and 2 washers onto the threaded studs using a 7/16" socket.
5. Repeat with passenger side bedrails and pivot brackets.
6. Locate 2 pivot pins, 2 E-Clips, and 2 Safety Rings in the same bag.
7. Insert the pivot pins into the middle hole of each pivot bracket.

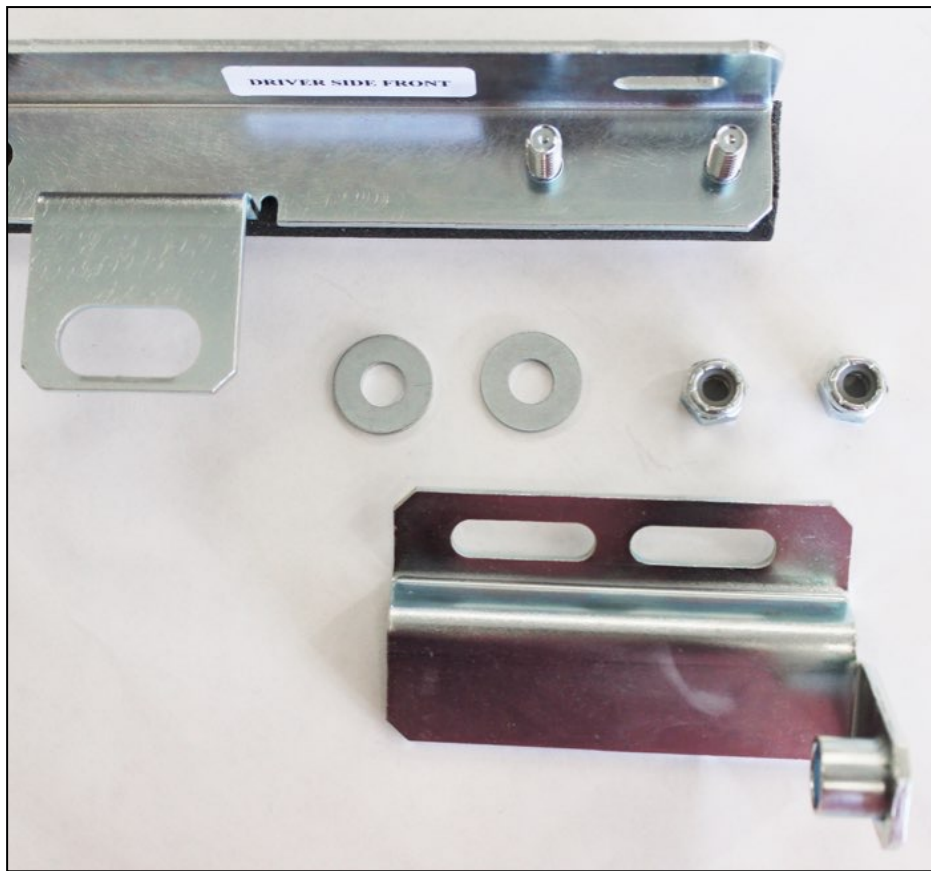


8. Secure the E-Clips onto the pivot pins. Make sure the E-Clip is in the small indent in the pivot pin. It helps to use the flat edge of something metal to push the E-Clip on.

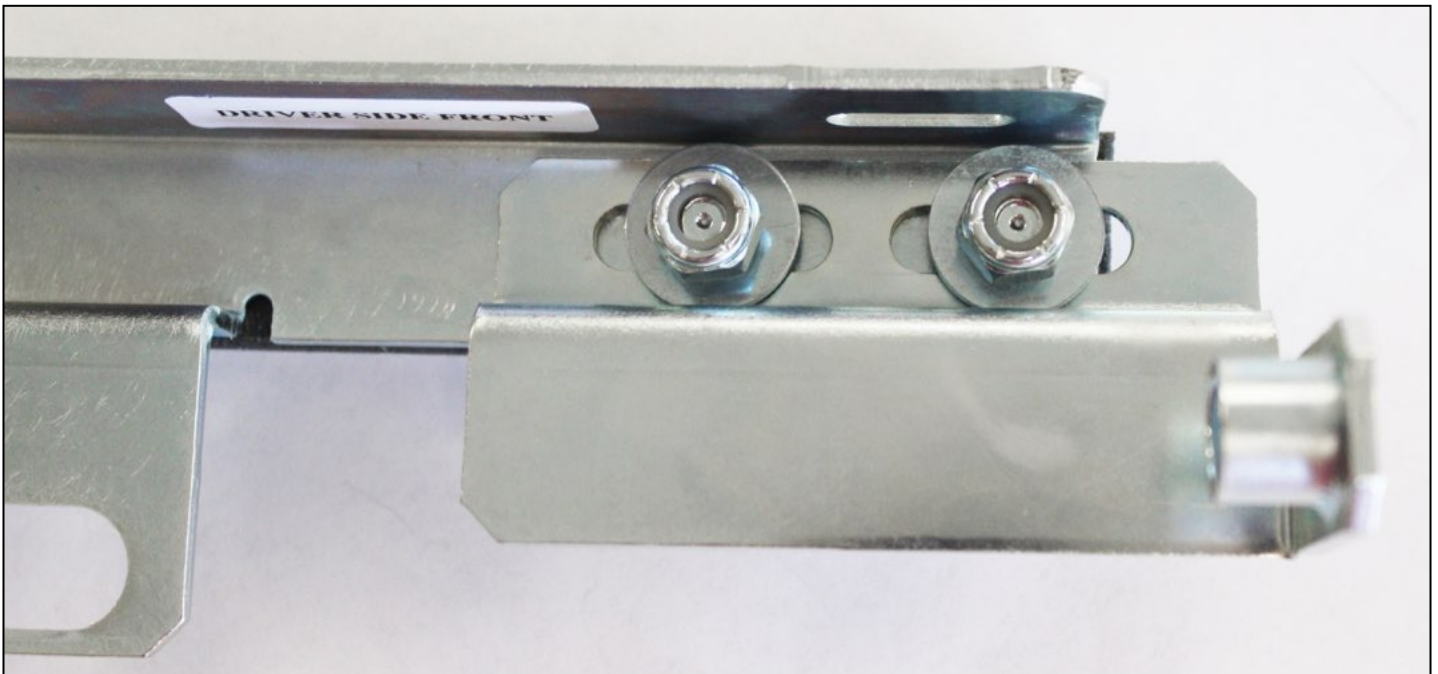


9. Insert safety rings into pivot pin holes by twisting the safety rings.
10. From the same medium bag, locate the 2 other bedrail brackets and the remaining nuts and washers.
11. The bedrail brackets are driver and passenger side specific, so ensure that you have the correct bracket for the driver side front bedrail (depicted on next page).

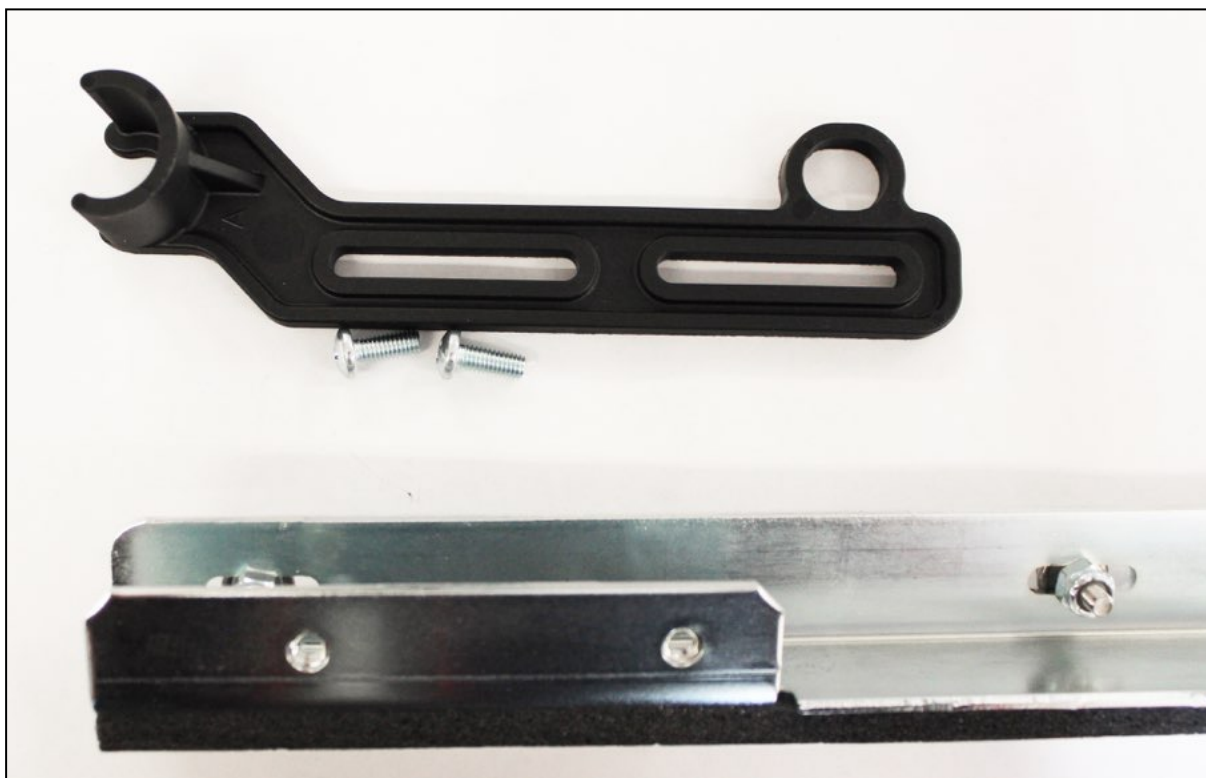




12. Place the bedrail bracket atop the stand offs on the front of the driver side bedrail.
13. Center the stand offs in the slots.
14. Using a 7/16" wrench, securely fasten the 2 nuts and washers onto the stand offs.
15. Locate the screw-in snaps with the nut, and install the screw-in snap and nut into the adjacent slot now that the bedrail bracket is installed. Ensure that the snap is facing outward just like all the other snaps on the bedrail. Center the snap in the slot and tighten the nut.



16. Locate the medium bag containing 2 black plastic rear bar retainers and hardware.
17. Using the (4) 10-32 screws, and a #2 Phillips screwdriver, mount the black plastic rear bar



retainers to the mounting location on the rear of the bedrail oriented as shown below. The plastic bars are marked “A” and “B”. “A” is the driver side piece and “B” is passenger side.



The retainer slot should face in and the ring should be up as shown. Center the screws in the slots and fasten securely. Save the remaining 2 self drilling screws in the bag for later in the installation process.

18. Locate the bolts remaining from the hard top removal if you have them; otherwise, locate the provided small bag containing (10) #12 x 3/4" panhead screws and washers.
19. Line the bedrails up on the side rails of the vehicle as shown.



20. Note: If your vehicle is missing the factory cosmetic side rail cover, it may be necessary to use spacers or several washers under each mounting bracket to level the bedrail before securing, as shown to the right.





21. If you are using the bolts from the hard top, use a wrench or socket and the (8) bolts and washers (no washers depicted) to secure the bedrails onto the vehicle through the existing 6 or 8 threaded holes in the side rails. Use one of the provided #12 screws and a 9/64" drill bit to drill a hole into the vehicle and secure the back end of the bedrail to the vehicle through the provided slot on the bedrail as shown below. Fasten bolts and screws securely.



22. If using the provided screws, use a 9/64" drill bit to drill holes into the vehicle side rails through at least 5 of the 8 slots on the bedrails. Be sure to have one screw in the front most slot and rear most slot to keep the ends secure.



23. Note: Any combination of remaining bolts and provided screws may be used to mount the bedrails to the vehicle. We recommend no fewer than 4 mounting locations on each side of the vehicle (8 total).

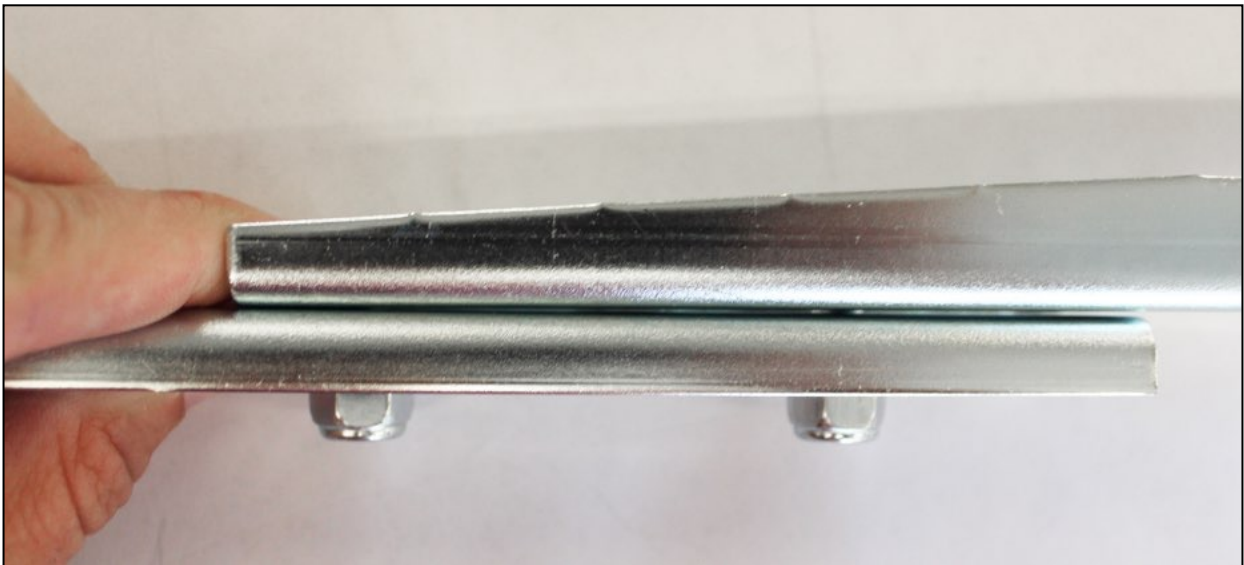
24. Repeat all of the above on passenger side.

## Door Surround Installation

1. Locate the driver side horizontal door surround, the driver side door surround extension, and the small bag containing the door surround hardware.

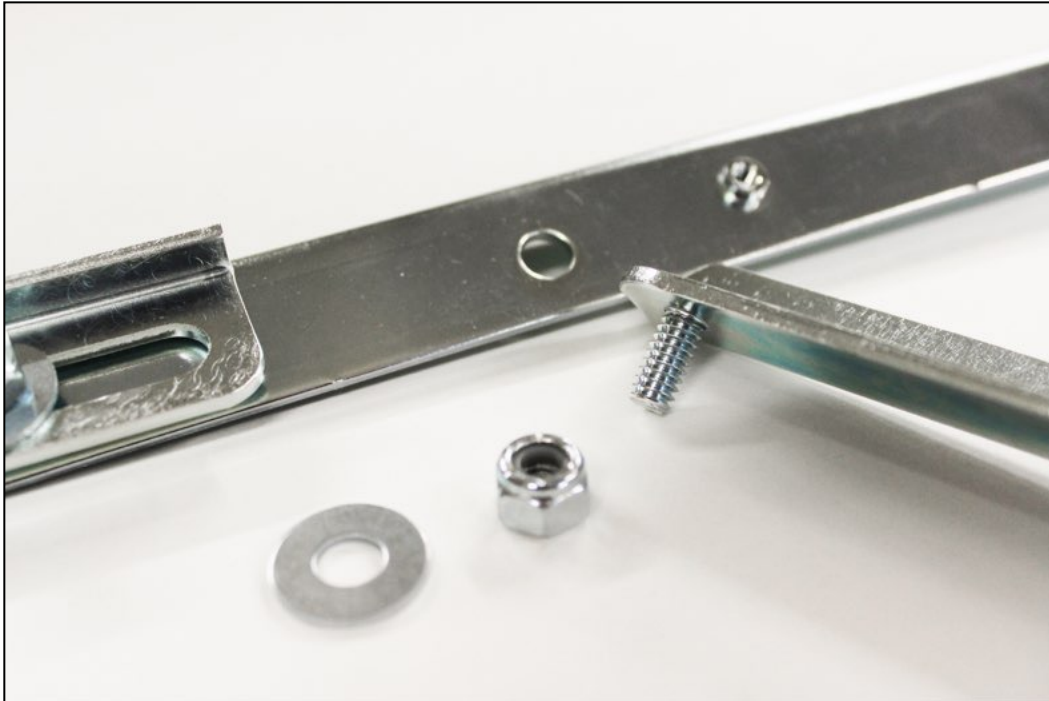


2. Mount the door surround extension onto the 2 stand offs on the horizontal door surround as shown. The flanges on the metal will face **OPPOSITE** directions. Driver side depicted below.



3. Using a 7/16" wrench, loosely fasten the stand offs in the center of the slots with the 2 nuts and 2 washers.

4. Locate the driver side vertical door surround, and a nut and washer from the same small bag.



5. Mount the vertical door surround to the horizontal door surround through the hole just to the front of where the door surround extension was mounted. The flange on the vertical door surround should face backward as shown, and all nuts should be on the same side.
6. Using a 7/16" wrench, loosely fasten a nut and a washer from the bag onto the stand off on the vertical door surround.



7. Driver side depicted in photos. Repeat with all passenger side door surrounds and remaining hardware. Pivot pins will be installed later.
8. Place the driver and passenger side door surround assemblies on the vehicle by putting the metal post on the vertical door surrounds into the hole located on the front of the bedrail brackets.

9. Close the doors and the windows while holding up the front horizontal door surround. This will be secured later in the installation process.
10. Let the rear horizontal door surround hang down loosely for now. This will be secured later in the installation process.
11. Locate the medium bag containing the 2 header brackets and hardware.



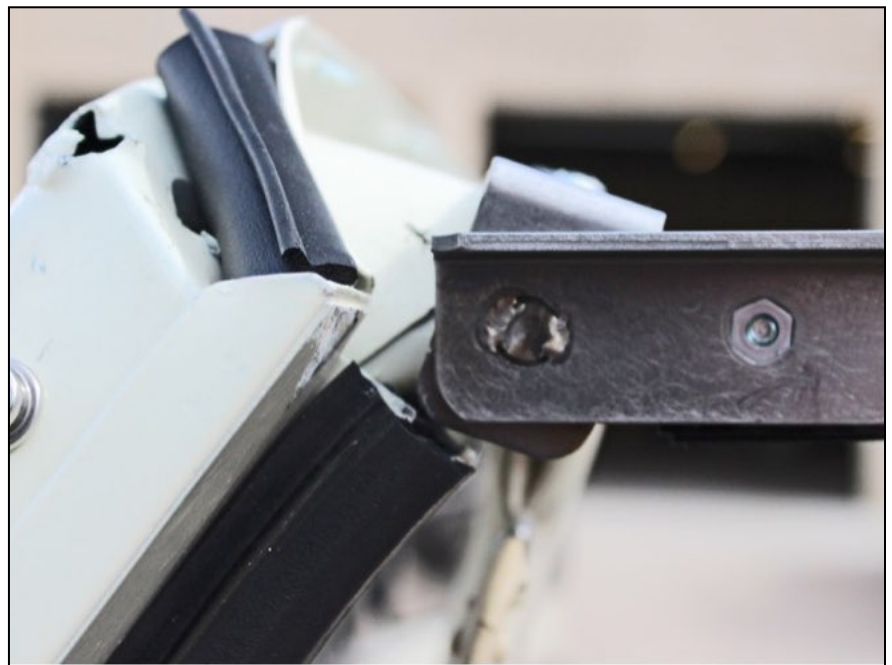
12. Place the driver side header bracket atop the windshield header such that the metal post in the front horizontal door surround inserts into the hole in the header bracket.



13. Place the metal post of the vertical door surround into the hole on the front of the bedrail.
14. Insert the safety pin into the metal post.



15. Close the door, and align the header bracket on the vehicle with the horizontal door surround as shown.



16. Once satisfied with the alignment of the door surrounds with the fit around the door, use a pencil to mark the drilling location of the inner most slot of the header bracket. The other hole for the outer most slot will be drilled later in the installation process.
17. **\*\*Apply caution while drilling into the header because it's very easy to break a drill bit in this process.**
18. Repeat on the passenger side with the remaining header bracket and the passenger side door surround assembly.
19. Using a 9/64" drill bit, drill the holes for the inner most screws of each header bracket.
20. Using a #3 Phillips screwdriver, loosely mount the header brackets to the vehicle with one of the (4) #12 panhead screws and one washer through the center of the inner most slot.
21. Note: We have provided (2) #14 panhead screws just in case one of the #12 screws or the drilled holes becomes stripped out while mounting the header brackets to the vehicle.
22. Ensure proper alignment of the header brackets and door surrounds with the doors closed.
23. Tighten the inner most screws of the header bracket.
24. Use a pencil to mark the drilling locations in the outer most slots of each header bracket.
25. Using a 9/64" drill bit and the 2 remaining #12 screws and washers, secure each header bracket to the vehicle through the outer most slots.

## Windshield Header Installation

1. Locate the windshield header bar, the 1" wide strip of black plastic, and the small bag containing 8 small self-drilling screws and 2 snap screws.
2. Measure the width of the windshield header on the vehicle.
3. Place the header bar atop the windshield as shown below, with the black plastic strip placed under the center of the bar as a spacer. A strip of plastic this thick will need to slide under the header bar later when installing the soft top.
4. Center the header bar over the windshield.
5. Using a #2 Phillips driver and drill, screw a self-drilling screw through the center hole in the header bar through the vehicle.
6. Screw the remaining 6 screws into the provided holes in the header bar through the vehicle while maintaining the gap provided by the plastic strip. There is one extra screw in case you lose one.
7. Save the 2 snap screws for later in the installation process.





## **Bulb Seal Installation**

1. Locate the strip of Bulb Seal.
2. Using a 50/50 alcohol/water solution or a similar household cleaner, thoroughly clean and dry the upper, outside edge of the windshield header to accept the bulb seal.



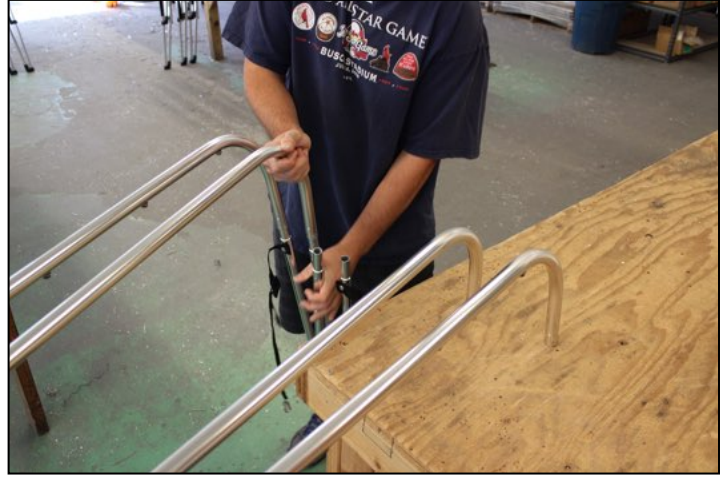
3. Align the bulb seal as shown above, and cut the length needed to reach from the windshield header bar to the corner junction of the front door frame as shown above, roughly 2”.
4. Remove the protective plastic covering the sticky side of the bulb seal, and carefully place it in said location on the vehicle.

## **Folding Frame Assembly and Installation**

1. Locate the 2 Cross Bars, the 2 folding frame uprights, and the 2 adjustable tensioning straps.
2. Slip the small loops on the ends of the tensioning straps onto the rear cross bar (the one with the snaps) such that the tensioning ladder lock and buckle will be oriented downward when attached to the forward cross bar as shown. Do not attach to the forward cross bar yet.

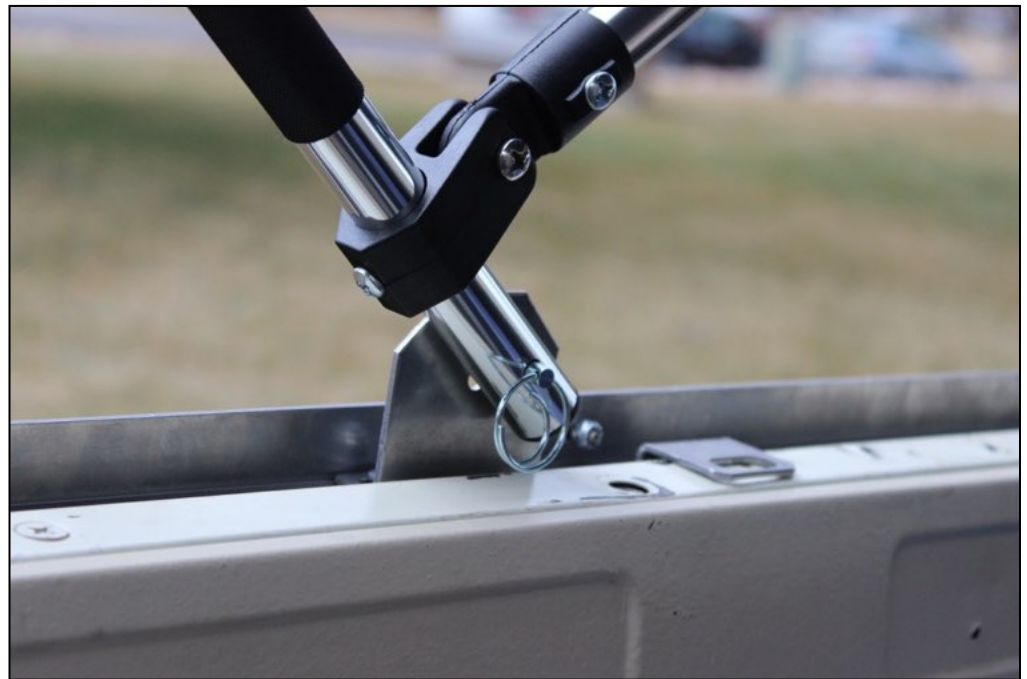


3. Join the two cross bars to the 2 folding frame uprights by coordinating the **COLORED DOTS** provided on the pieces, and ensure the push pins are locked into their holes.  
**\*\*Important: Keep fingers clear of the sharp, metal junction where the cross bars will meet the folding frame when clipping them together. Injury is likely if fingers get pinched.**



4. **\*\*Tip: It helps to stand the folding frame uprights up, and with another person, or a table to rest one end of the cross bars on, jiggle the cross bars down to join them to the uprights. (4 cross bars depicted above)**

5. Remove the 2 safety rings from the pivot pins on the pivot brackets on the bedrails (see page 5 if instruction is needed).
6. Using the 2 holes near the bottom of the folding frame, slide the frame onto the pivot pins with the **forward cross bar forward**. Driver side depicted below.
7. **Secure the safety rings back on.**



8. Locate the small bag that contained the door surround hardware.
9. Using the remaining 2 pivot pins and 2 safety rings, secure each side the folding frame to the rear horizontal door surrounds, which are hanging loosely at this point. The pivot pin will go through the holes in the black plastic hinge piece mounted on the forward cross bar from the outside such that the safety ring will be **inside the vehicle** as shown.



10. With the doors of the vehicle closed, and using a 7/16" wrench or socket, secure the 2 nuts joining the 2 horizontal door surrounds on each side of the vehicle (4 nuts total). The rear horizontal door surround should be angled downward slightly to meet with the forward cross bar, and placing the nuts slightly forward of center in the slots should ensure the correct upward tension on the forward cross bar and soft top canopy. Adjustments can be made here after the soft top is installed to achieve desired tension.



## **Soft Top Canopy Installation**

1. Release the folding frame from the door surrounds by taking out the forward cross bar safety rings and the pivot pins.
2. Optional: Reinstall the pivot pins and safety rings on the forward cross bar to ensure that you don't lose them.
3. With the tailgate open, lower the folding frame to the rear of the vehicle.
4. Place the canopy on the tailgate with the rear canopy snaps facing up as shown.



5. Place the 2 tensioning straps between the 2nd and 3rd snaps on each end of the rear cross bar as shown.
6. Attach the two upper tensioning straps to the forward cross bar by using the buckle. Make sure there are no twists in the straps. Keep loose for now.

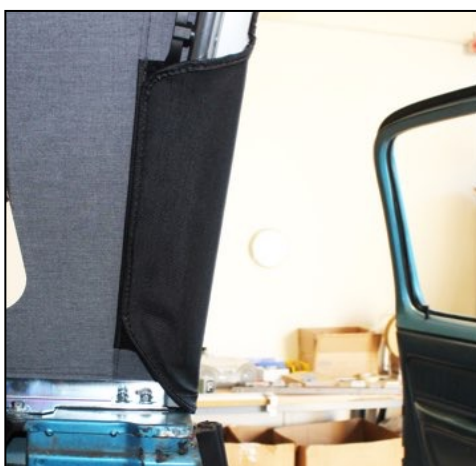
7. Snap the canopy to the rear cross bar by slipping the fabric under the bar and around as shown.



8. Stand on the tailgate and carefully lift the entire canopy and folding frame up and forward until you can rest the front of the canopy over the windshield header bar.
9. From the ground, undrape the side panels and rear panels, and let them hang loosely.
10. Reattach the forward cross bar to the door surrounds with the 2 pivot pins and safety rings.



11. Place the plastic strip that is sewn into the front edge of the canopy underneath the windshield header bar, and ensure that the canopy is centered left to right.
12. Latch the 2 rear safety straps to the rings on the plastic rear bar retainers.
13. While pulling down on the rear cross bar, tighten the 2 rear safety straps (not the upper tensioning straps yet). The safety straps should be snug, not loose nor overtightened.
14. Connect the forward most snap on the side window panel to its mate on the bedrail on the driver side.
15. Connect the rear most snap on the same panel to its mate on the bedrail by pulling down on the rear cross bar and pulling on the fabric if necessary.
16. Tighten the rear safety strap further to relieve excess tension on the rear snap. **\*\*Note that it is a good idea to share tension between the rear safety straps and the rear most snaps instead of having all the tension only on the snaps. This will also help with any wrinkles in the rear corners.**
17. Now snap the rest of the snaps on the driver side. Note that we recommend snapping the front most and rear most snaps first each time you install the top on the vehicle. This makes it easier to snap the remaining snaps and align the canopy properly.
18. Repeat the above on passenger side.
19. Adjust the 2 upper tensioning straps between the two cross bars until there is adequate upward pressure to give the canopy its taught shape.
20. Make sure that the 2 front door velcro flaps on the canopy are accessible on each side.



21. Secure the top velcro flaps under and around to the inside of the door surround velcro.

22. Secure the side velcro flaps around the vertical door surrounds to the velcro on the fabric as shown above. Use desired tension.



23. Locate the long Rear Window Bar and the (2) 12" x 3/4" bars.

24. Insert the 2 shorter bars into the ends of the longer bar with the plastic end caps facing out.



25. Standing at the rear of the vehicle, push the two ends of the bar assembly into the rear plastic bar retainers while adjusting the length of the bar assembly as necessary. It should fit securely end to end into the given space within the plastic bar retainers.

26. Center the long bar over the other two 12" bars.
27. Locate the remaining 2 small self drilling screws from the rear bar retainer bag.
28. Using a drill and a #2 Phillips bit, screw the screws into the pre-drilled holes to join the 3-bar assembly.
29. Now remove the bar and slide it into the sewn-in sleeve at the lower part of the rear window panel. Center the bar.
30. Join the zippers in the upper corners of the rear window panel and zip closed the window panel.
31. Clip the bar back into the plastic retainers.
32. Close the tailgate while lifting up slightly on the fabric hanging at the bottom of the window panel.
33. \*\*Optional: Use the provided extra strips of velcro to hold the bottom of the rear window flap to the tailgate. Wipe clean and dry the tailgate surface before placing the sticky side of the velcro onto the vehicle. The velcro strips can be placed on either side of the bracket on the tailgate, but should not be placed direct over the bracket due to wrinkling.



34. Locate the 4 remaining snap screws located in the bag which held the 8 self-drilling screws for the header bar.
35. While pulling forward and downward on the front ear flap containing the snap at the front of the vehicle, use a pencil to mark where the snap screws will need to be when the front flaps on the canopy come down near the outside of the windshield.
36. Using a 1/8" drill bit, drill the holes for the snap screws.
37. Using a #2 Phillips screwdriver, screw in the snap screws.
38. Snap the front canopy flaps to the installed snaps.



## Installation Complete



## Retracting the Soft Top

1. Undo all side snaps and door surround velcro.
2. Raise the rear window panel zippers all the way to the top without disconnecting them.
3. Release the rear window retainer bar.
4. Fold the side panels up onto the roof canopy neatly.
5. Fold the rear window panel up onto the roof as well.



6. Loosen or release the 2 safety straps and release the 2 pivot pins on the forward cross bar.
7. Remove the plastic strip from under the windshield header bar.
8. Carefully make multiple folds backward from the front of the canopy until it is about the same size as when it originally came out of the box. This will ensure that the protective boot cover fits over the folded canopy. Rest the canopy and frame on the tailgate.



9. While leaving the 2 safety straps out, place canopy in protective boot cover, and secure the boot cover straps. **\*\*Do not operate vehicle without securing the boot cover over the soft top and latching the 2 rear safety straps to the bedrails.**
10. Once the canopy is in the protective boot cover, hook the 2 safety straps back onto the rear bar retainers and tighten.



11. Remove the 2 door surrounds by removing the safety rings in the metal posts, and popping the metal posts out of the header bar brackets and the bedrail brackets.
12. Fold the vertical door surround in line with the rest of the assembly and place pieces in the vehicle for future reinstallation.



## Optional Driving Configurations

1. Fully retracted with the boot cover installed and the safety straps buckled.



2. Rear window rolled up and buckled.
3. Rear window completely removed.

4. Sides and rear window rolled up. **Do not drive with the the sides rolled up without also rolling up or removing the rear window.**



5. To fully remove the Softopper once it's within the boot cover, release the 2 safety straps, remove the 2 safety rings from the pivot pins by twisting turning them, and completely remove the top. **Reinstall the safety rings.**



6. Remove the 2 door surrounds by removing the safety rings in the metal posts, and popping the metal posts out of the header bar brackets and the bedrail brackets.



7. Fold the vertical door surround in line with the rest of the assembly and place pieces in the vehicle for future reinstallation.

# Softopper Care and Maintenance

**Your top is made of the finest materials available. To keep it looking new and for product longevity and durability, it will need periodic cleaning and maintenance. All pieces are individually replaceable; call 1-800-810-7227, or order your parts online at Softopper.com.**

**Washing:** The fabric should be washed from time to time using a mild soap and warm water. Be sure to rinse all soap off the top when washing is complete.

**Vinyl Windows:** Windows should be kept clean to avoid scratching. Wash with a water-soaked sponge or cloth and a mild dishwashing detergent. **Do not use a coarse brush on the windows and never wipe the windows when they are dry.**

**COLD WEATHER:** As with all automotive and marine vinyls, extreme care must be taken when rolling up or folding the windows in cold temperatures. **Vinyl becomes stiff in cold temperatures and may crack. Retracting the Softopper in cold temperatures is not recommended and will void the warranty for the windows (see Warranty information for more detail on length of window warranties).** When opening the rear of the Softopper in cold weather, be sure to raise the zippers as high as possible so that any folding will occur to the topper fabric and not to the vinyl window.

**Zippers:** Keeping the zippers clean and lubricated with a silicone lubricant will help prevent damage and keep the zippers in smooth working condition.

**Leakage:** As with any sewn automotive top there is always a slight risk of leakage. **Right out of the box the Softopper may not be 100% waterproof.** If you experience any water seeping through at the seams, apply **Seam Sure** (supplied), on the **INSIDE** of the affected seams. It will look very messy on the outside of the canopy. **Shake** Seam Sure well and apply liberally to the inside seams concentrating on areas where needle and thread penetrated the fabric.

**Snaps:** Keep snaps clean and lubricated with a silicone lubricant to help prevent snaps from sticking to the studs. If a snap does become stuck to a stud, use a screwdriver and gently pry apart to prevent damage to the snap or top fabric. If any snaps need to be replaced due to sticking or damage please call Softopper and we can send out a small do-it-yourself repair kit.

For further information please contact:  
**Softopper LLC**, customer service  
(800) 810-7227 or (303) 304-0533

## Warranty

We warrant all of our Softoppers to be free from defects in material and workmanship for a period of one year, with the exception of vinyl windows and zippers, provided there has been normal use and proper maintenance.

**Vinyl Windows** are warranted for a period of 3 months from the date of purchase.

**Zippers** are guaranteed to be in perfect working condition when leaving the factory. Due to atmospheric conditions, dirt, sand, road grime, dust, and abrasive cleaners, etc., zippers are warranted for a period of 6 months from the date of purchase.

**Toyota 4 Runner, Jeep Wrangler, Blazer, Jimmy, Scout, Bronco, and RamCharger** side curtain windows are warranted for 45 days from the date of purchase. Retracting or closing the top when the temperature is below 40 degrees may void the warranty on the side windows, as clear vinyl plastic can crack very easily at these temperatures. Use caution when retracting the top or cleaning off the windows in freezing temperatures.

**Returns must be made within 30 days of purchase**, and must be pre-approved and have Softopper's issued RGA number attached. Any defective items must be returned with proof of purchase to Softopper 333 Centennial Pkwy B, Louisville CO 80027, **freight pre-paid**. Items returned must be carefully packed, in clean condition, with plastic windows protected from scratching and creasing. This warranty does not cover damage resulting from abuse, misuse, alteration, accident or damage in transit. Softopper's obligations under this warranty are limited to the aforementioned **repair** or **replacement** of warranty defects for which return authorization has been received during the warranty period, and Softopper SHALL NOT BE LIABLE FOR ANY INCIDENTAL OR CONSEQUENTIAL DAMAGES ARISING FROM BREACH OF THIS OR ANY IMPLIED WARRANTY. This warranty applies to the original purchaser only. All remedies under this warranty are limited to repair or replacement of any item or items found to be defective by the factory within the time period specified.

For further information or request for repair work, please contact:

**Softopper**, customer service  
(800) 810-7227 or (303) 304-0533