

# SOFTOPPER®

## Telluride Tonneau Installation Instructions

No Drilling in Truck Bed Required

We're here to help! Visit our web site: [www.Softopper.com](http://www.Softopper.com)

### INSTALLATION TIME



Less than 15 minutes

### SKILL LEVEL



1 - Easy



### TOOLS



Safety Glasses

On vehicles that have utility tracks,  
You may need;



Slotted  
Screwdriver

or



Ratchet with  
5/16" Socket

or



Power Drill  
with 5/16"  
Nut Driver

### Installation Tips

Before you begin installing this assembly, read all instructions thoroughly.

Check and secure all clamps to bed frame as indicated in the installation instructions before operating your vehicle.

Tonneau cover clamps must be securely attached prior to vehicle operation.

Secure retaining straps when cover is in open position.



**CAUTION**

Safety glasses should be worn at all times while installing this product.



**WARNING**

The buckle of each retaining strap and both clamps must be fastened securely to avoid damage to personal property or possible personal injury.

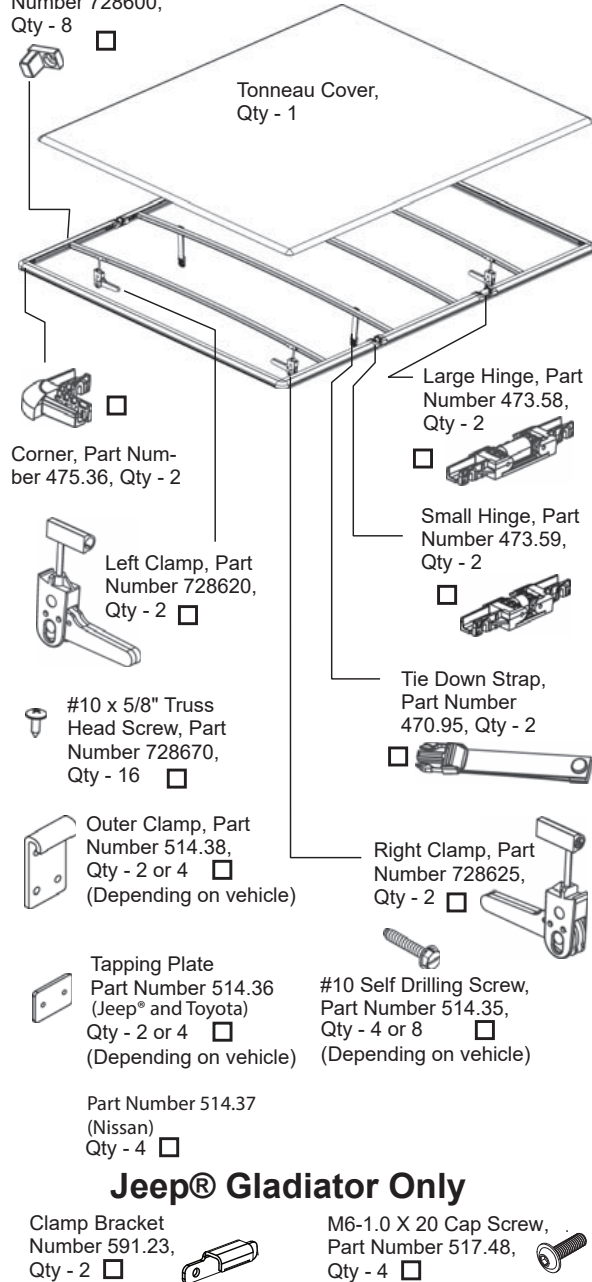
If the vehicle has an Over-the-Rail Bedliner, use a certified installer to perform the initial installation. Modifications to the Bedliner may be required.



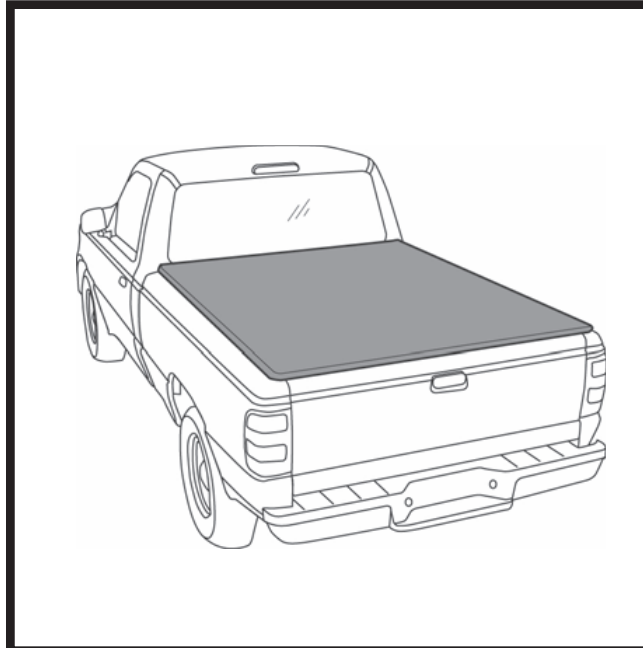
# Telluride Tonneau Installation Instructions

Bow Mount, Part Number 728600, Qty - 8

## Parts List



### Jeep® Gladiator Only



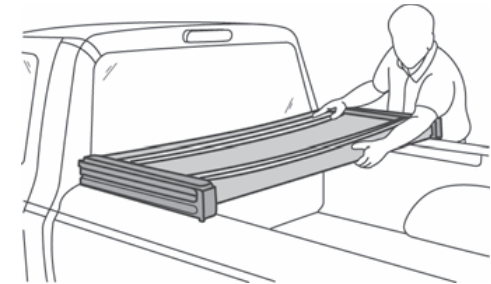
## 1 Remove Telluride Tonneau from Box

Take fully assembled Telluride Tonneau out of box and unfold.



## 2 Place Tonneau on Bed

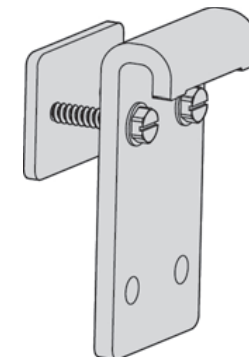
Place the Tonneau on the vehicle with the retaining straps facing up. Align the outside edge of the front rail with the outside edge of the bed. Center the Tonneau from side to side.



### Trucks with Track System Only

## 3 Assemble Outer Clamp to Tapping Plate

Use the #10 Self Drilling Screws and a suggested tool to start the screws through the Outer Clamps into the Tapping Plates.

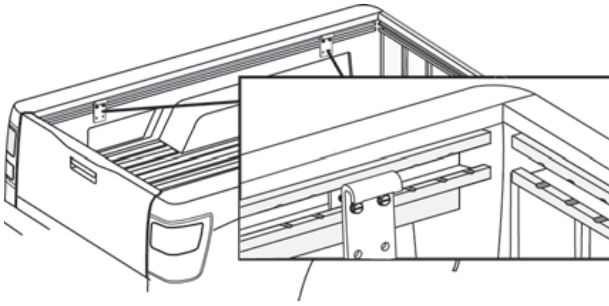


# Telluride Tonneau Installation Instructions

## Trucks with Track System Only

### 4 Position Outer Clamp Assemblies

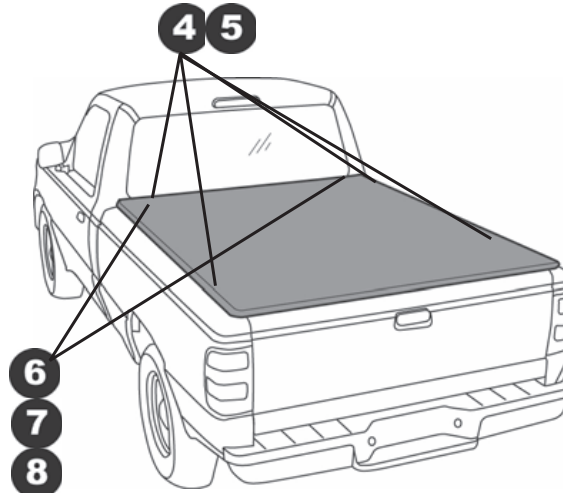
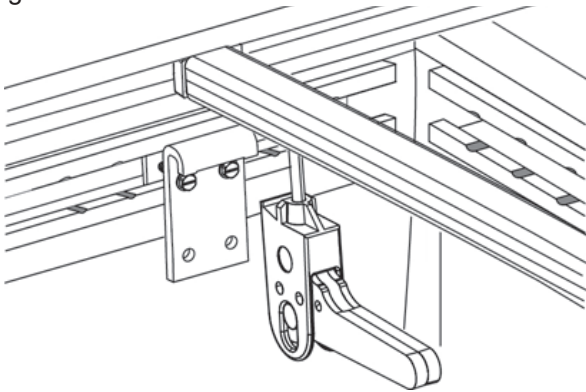
Remove the track end caps. Slide two (2) of the Outer Clamp Assemblies into the track on each side. Place them approximately 10" from the front and rear ends of the track system. Replace the end caps.



## Trucks with Track System Only

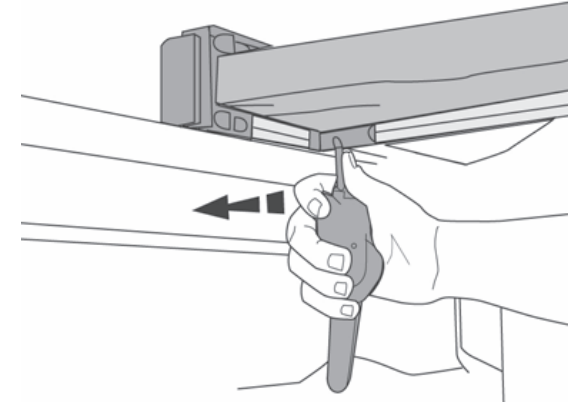
### 5 Secure Outer Clamps

Align the Outer Clamp with the tonneau latches and make sure that they are centered with each other. Tighten the screws.



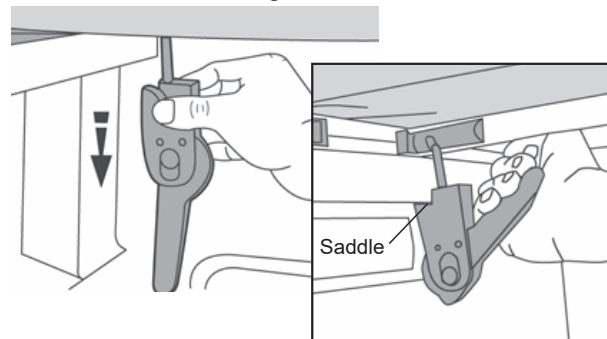
### 7 Position Front Clamp

Slide the clamp to the end of the bow. Position the notched section of the saddle under the inner lip of the truck bed.



### 6 Release Front Clamp

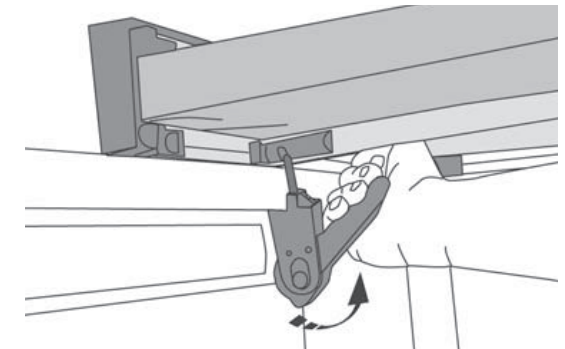
On the driver's side, reach under the Tonneau and rotate the front clamp down from the storage position. Push the top saddle part of the clamp down and adjust the clamp by rotating it clockwise to loosen or counter-clockwise to tighten.



### 8 Secure Front Clamp

Pull the handle up to secure the clamp. Repeat Steps 6 – 8 on the passenger side.

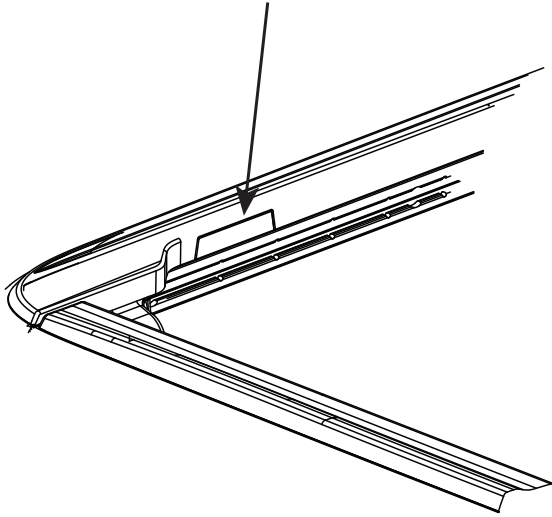
**NOTE** Make sure clamps are secure before operating vehicle.



# Telluride Tonneau Installation Instructions

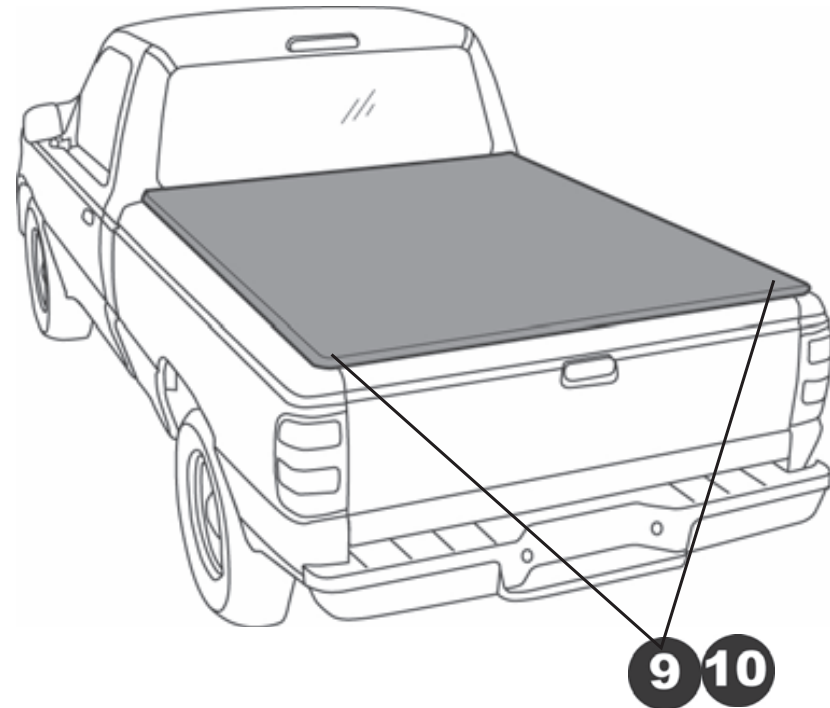
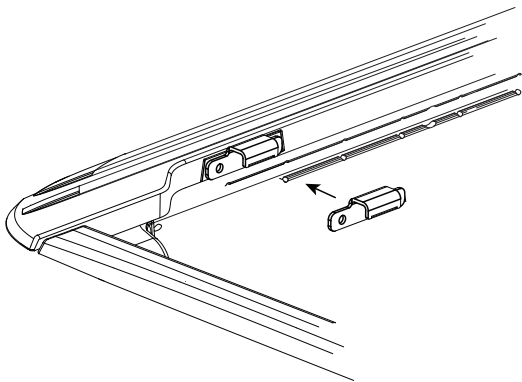
Jeep® Gladiator only

- 9** Use a utility knife to cut out cap section on vehicle to expose 2 threaded holes.



## **10** Install Clamp Bracket

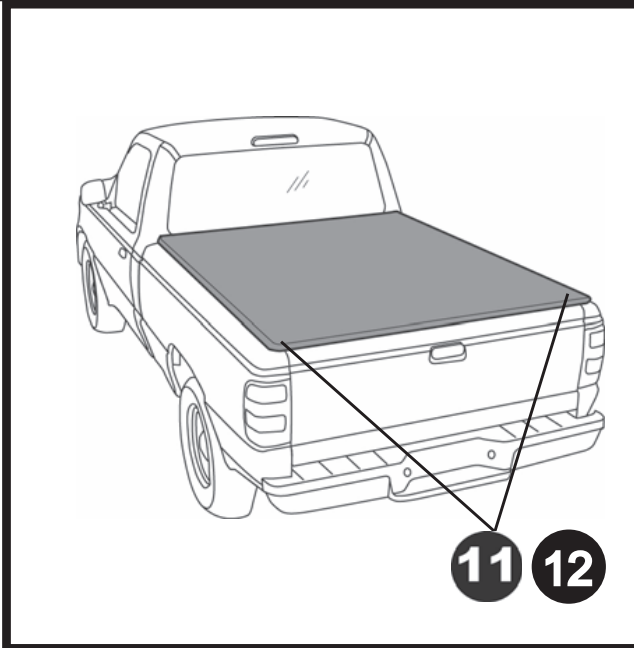
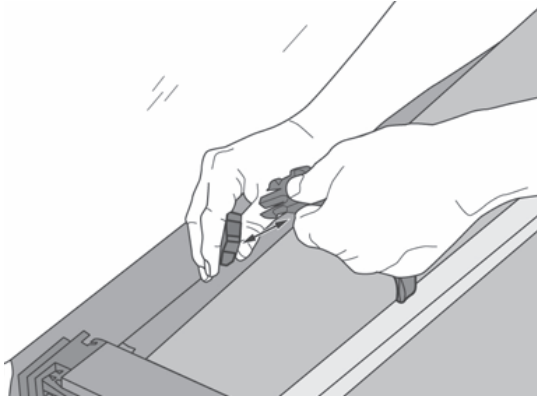
Use two (2) M-6 socket cap screws to attach the left and right clamp brackets to both sides of the vehicle.



# Telluride Tonneau Installation Instructions

## 11 Unbuckle Retaining Straps

Unbuckle the retaining straps – one buckle per strap.



## Driving with the Tonneau Open Release Rear Clamps

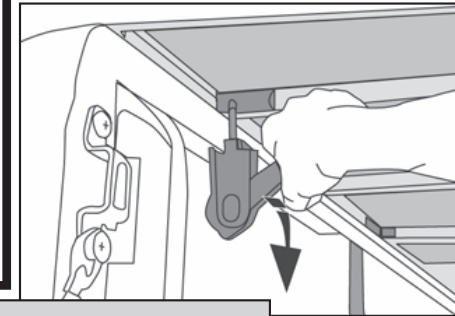
Pull down on the handle to release the rear clamp on the driver's side.

Push down on the saddle to release it from the inner lip of the truck bed.

Slide clamp toward inside of bed.

Place clamp in horizontal storage position.

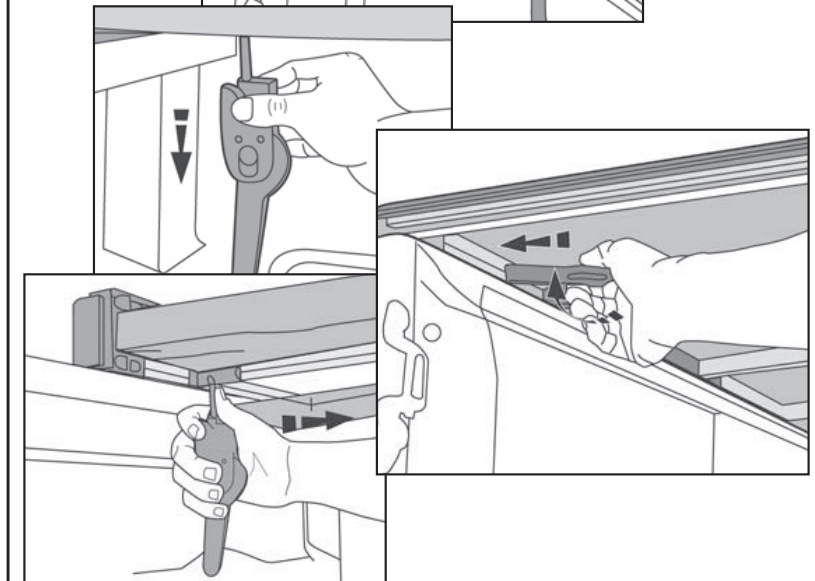
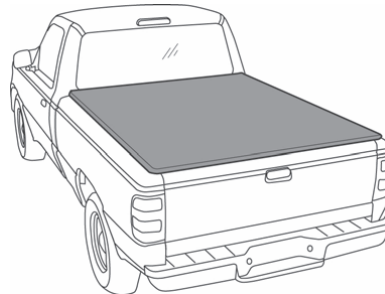
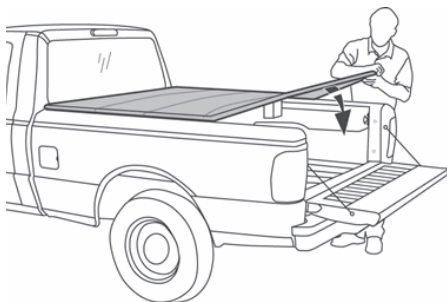
Repeat on the passenger side.



## 12 Secure Tonneau

Lower the tailgate and unfold the Tonneau to cover the bed. Repeat steps 7-8 to secure rear clamps.

**NOTE:** If clamp bracket from step 10 was installed, be sure clamp falls in the middle of the clamp. If it does not, move the tonneau either forward or rearward slightly.



# Telluride Tonneau Installation Instructions

---

## Care and Maintenance of your SOFTOPPER Product

Your Softopper product is made of the finest materials available. To keep it looking new and for the maximum possible wear, it will need periodic cleaning and maintenance.

**Washing:** The fabric should be washed often using mild soap, warm water and a soft bristle brush. Rinse with clear water to remove all traces of soap.

**Water:** Seeping through at the seams may be stopped by applying 3-M Scotchgard® on the inside of the seams. Rips in the fabric may be repaired with Bondex® iron on patches. Iron the patches to the Inside of the top, carefully following the Bondex® instructions.

**Snaps:** Keep snaps cleaned and lubricated to help prevent snaps from sticking to the studs. If a snap does become stuck to a stud, use a screwdriver and GENTLY pry apart to prevent permanent damage to the snap or the fabric.

---

## SOFTOPPER TONNEAU COVERS LIMITED 1 YEAR WARRANTY

### What's covered?

All defects in materials or workmanship on Softopper Tonneau Covers for pick-up truck beds. This warranty does not apply to other Softopper products.

This warranty and any implied warranties including merchantability and fitness for a particular purpose. The warranty expires if the vehicle is transferred to another owner. This warranty is not transferable.

### What Softopper will do

During the warranty period as written above, Softopper shall, at its option, either repair or replace any defective product at no charge. Softopper will not pay for labor charges associated with installation or removal of the product. Should a specific product be discontinued, Softopper may, at its option replace the discontinued product within 1 year of purchase. current product or like product.

### The Warranty does not cover:

Damage, defect, or malfunction caused by misuse, abuse, accident, fire, improper installation, modification, improper or inadequate maintenance, or hazards, or acts of God. Incidental or consequential damages are not covered under this warranty. Some states do not allow exclusion or limitation, so this may not apply to you. This warranty gives you specific legal rights, and you may have other rights which vary from state to state.

### Warranty Service:

Retain your proof of purchase. Proof of purchase must accompany any warranty claim. A defective item should be returned to the place of purchase. Customer Service may be contacted for help determining whether a product is defective. Softopper Customer Service may be reached at 1-800-810-7227, or via email at [info@softopper.com](mailto:info@softopper.com).



For further information or request for warranty work, please contact:  
Softopper, Customer Service  
Toll-Free: (800)810-7227 or (303)304-0533  
E-mail: [info@softopper.com](mailto:info@softopper.com)  
Website: [www.Softopper.com](http://www.Softopper.com)

---